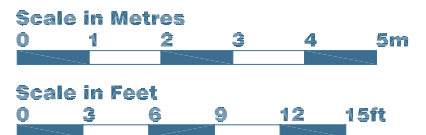
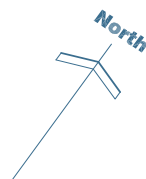
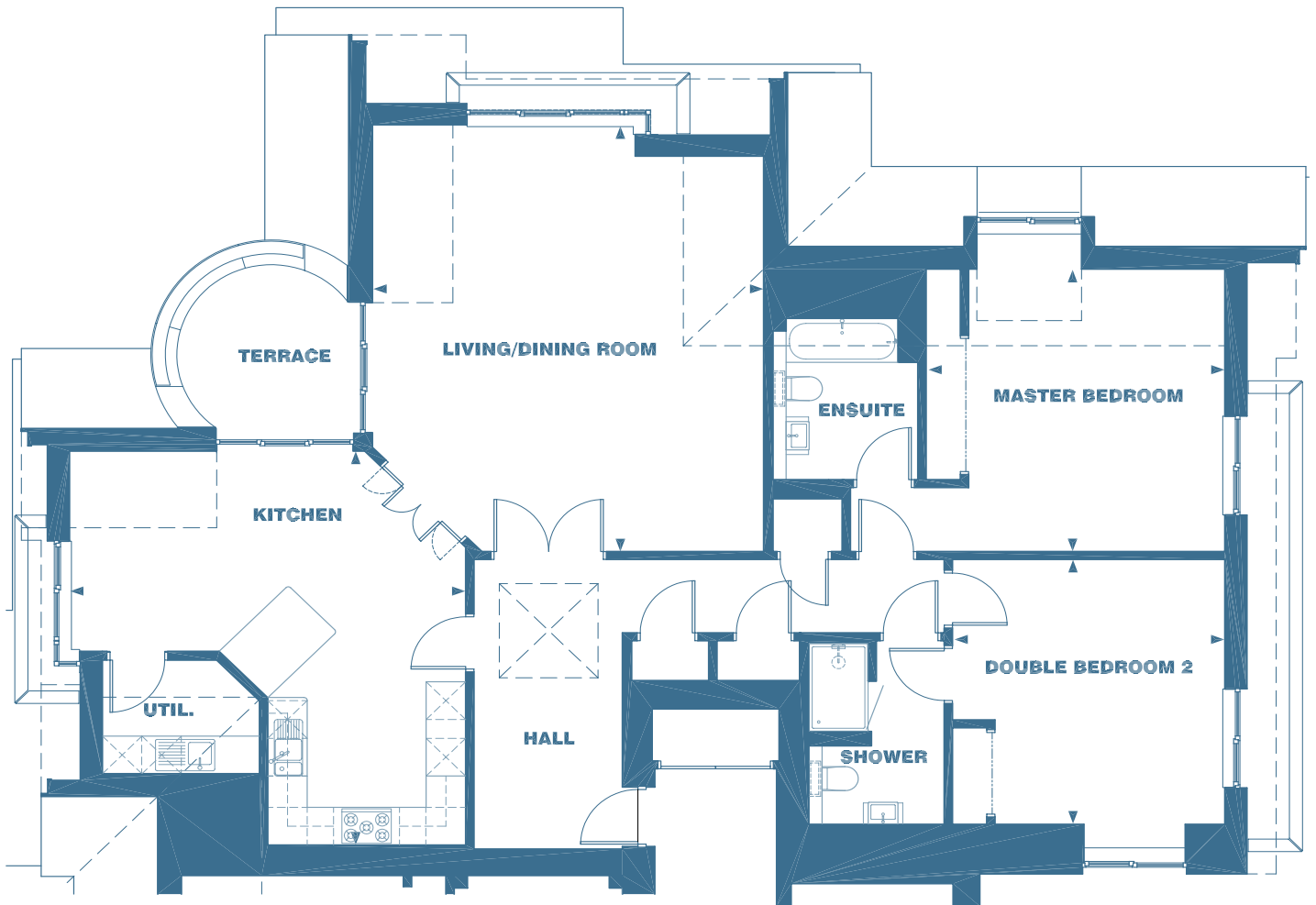




APARTMENT 14 THIRD FLOOR



Kitchen	6.27m x 5.98m	20'7" x 19'7"
Living/Dining Room	6.30m x 5.94m	20'7" x 19'6"
Master Bedroom	4.50m x 4.53m	14'9" x 14'10"
Double Bedroom 2	4.22m x 3.49m	13'10" x 11'5"
Total Floor Area	146.8m²	1580ft²
Terrace Area	12.2m²	131ft²

+ 1 'Beach Hut' External Store
+ 1 Private Parking Space





APARTMENT 14 THIRD FLOOR

GENERAL APARTMENT INFORMATION

- Large timber and glass sliding screen divider between Kitchen and Lounge to allow choice of open-plan effect.
- External terrace opening off lounge.
- Kitchen layouts created by 'Ashley Ann', with high gloss laminate finish units with granite worktops. 'Frank' 1 1/2 bowl sink and 'Neff' integrated gas hob, eye level electric double oven, larder fridge/freezer and dish washer. Freestanding island unit with bamboo worktop.
- Bathroom and Shower Room with 'Porcelanosa' white sanitaryware, polished chrome taps and fittings, and with tiled walls and floors.
- High quality wool twist carpets to all bedrooms.
- Separate Utility Room with sink and 'Bosch' washing machine and tumble dryer.
- Oak finish internal doors, with polished chrome ironmongery.
- Market leading, environmentally friendly flooring with lifetime guarantee 'Pergo' flooring to living areas, hall and kitchen, oak finish, in wide plank style.
- Chrome/glass wall mounted light fittings, with matching feature pendant over kitchen island unit.
- Gas fired central heating with underfloor heating throughout apartment.
- Apartments are enabled for broadband, cable and HD TV.

FLAT SPECIFIC INFORMATION

- Apartment faces South-West, North-West, North-East and South-East
- Living/Dining Room faces North-West with full height window, and to South-West with folding glazed screen opening on to curved private terrace, with open outlook and views to North-West.
- Kitchen faces South-West with full height window, and North-West with folding glazed screen opening on to same curved private terrace.
- Master Bedroom faces North-West with full height window, and North-East with full height window.
- Double Bedroom 2 faces North-East with full height window and South-East with full height window.



CONTACT DETAILS

Telephone enquires:

Tel: 01620 892000

Mob: 07513 591266

www.broadsands-northberwick.co.uk

SIMPSON & MARWICK
SOLICITORS

eastlothianprimeproperty.com

Disclaimer: Whilst every effort has been made to ensure their accuracy, the statements or plans are not guaranteed and may have to change for unforeseen reasons.