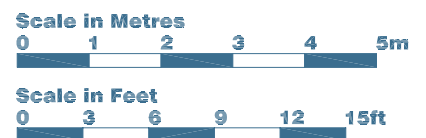
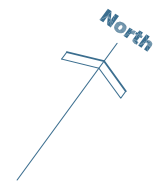




APARTMENT 9 SECOND FLOOR

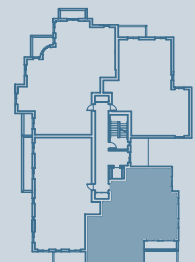


Kitchen	3.37m x 4.70m	11'1" x 15'4"
Living/Dining Room	6.54m x 4.61m	21'5" x 15'1"
Master Bedroom	4.52m x 4.06m	14'10" x 13'4"
Double Bedroom 2	3.64m x 3.20m	11'11" x 10'6"

Total Floor Area 122.0m² 1323ft²

Terrace Area 5.0m² 54ft²

- + 1 'Beach Hut' External Store
- + 1 Private Parking Space





APARTMENT 9 SECOND FLOOR

GENERAL APARTMENT INFORMATION

- Large timber and glass sliding screen divider between Kitchen and Lounge to allow choice of open-plan effect.
- External terrace opening off lounge.
- Kitchen layouts created by 'Ashley Ann', with high gloss laminate finish units with granite worktops. 'Frank' 1 1/2 bowl sink and 'Neff' integrated gas hob, eye level electric double oven, larder fridge/freezer and dish washer. Freestanding island unit with bamboo worktop.
- Bathroom and Shower Room with 'Porcelanosa' white sanitaryware, polished chrome taps and fittings, and with tiled walls and floors.
- High quality wool twist carpets to all bedrooms.
- Separate Utility Room with sink and 'Bosch' washing machine and tumble dryer.
- Oak finish internal doors, with polished chrome ironmongery.
- Market leading, environmentally friendly flooring with lifetime guarantee 'Pergo' flooring to living areas, hall and kitchen, oak finish, in wide plank style.
- Chrome/glass wall mounted light fittings, with matching feature pendant over kitchen island unit.
- Gas fired central heating with underfloor heating throughout apartment.
- Apartments are enabled for broadband, cable and HD TV.

FLAT SPECIFIC INFORMATION

- Apartment faces North-East and South-East
- Living/Dining Room faces North-East with full height window overlooking shrub border, and faces South-East with french doors opening onto private terrace.
- Kitchen faces North-East with full height window overlooking shrub border.
- Master Bedroom faces South-East with full height window overlooking shrub border.
- Double Bedroom 2 faces South-East with full height window overlooking shrub border.



CONTACT DETAILS

Telephone enquires:

Tel: 01620 892000

Mob: 07513 591266

www.broadsands-northberwick.co.uk

SIMPSON & MARWICK
SOLICITORS

eastlothianprimeproperty.com

Disclaimer: Whilst every effort has been made to ensure their accuracy, the statements or plans are not guaranteed and may have to change for unforeseen reasons.